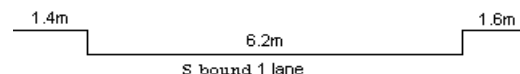
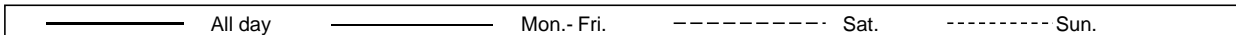
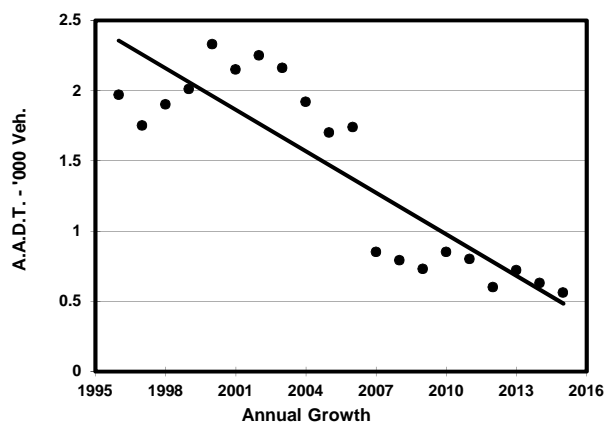
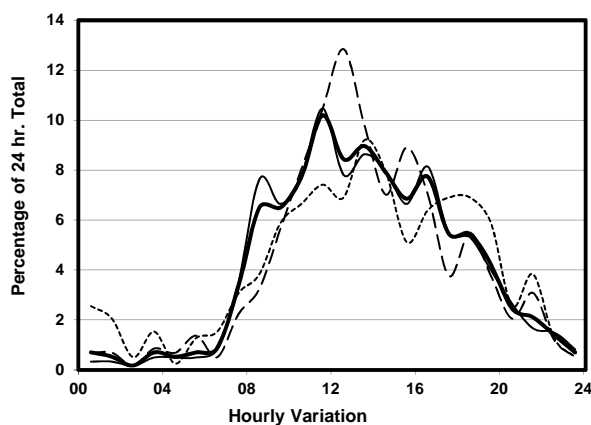
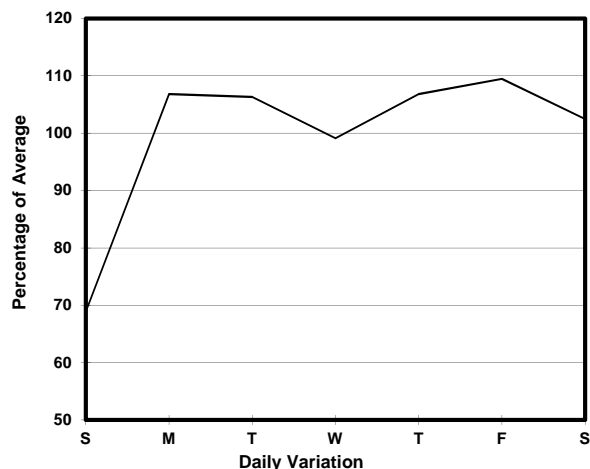
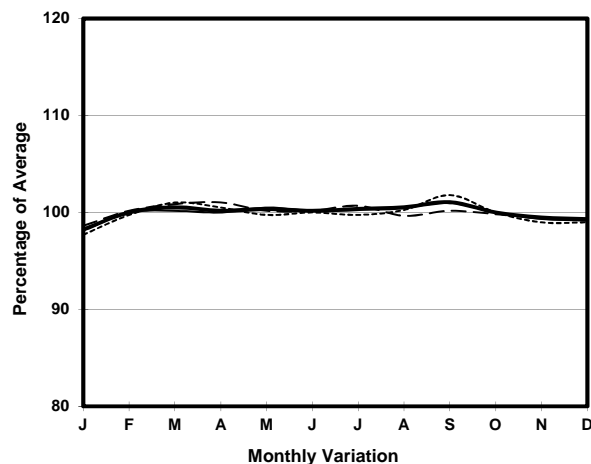


YEAR 2015
 COVERAGE (B) STATION 2405
 ROAD NETWORK MINOR
 ROAD TYPE LOCAL DISTRIBUTOR

LINK COCHRANE ST (from QUEEN'S RD C to WELLINGTON ST)



1. TRAFFIC FLOW VARIATION AND GROWTH



2. TRAFFIC CHARACTERISTICS (BY DIRECTION)

Parameter	All - Day	Mon. - Fri.	Sat.	Sun.
SOUTH BOUND				
A.A.D.T.	560	600	580	390
R 12 / 24 - %	85.1	86	84.4	76.2
R 16 / 24 - %	95.3	95.8	94.5	89.8
AM Peak Hour	0800-0900	0800-0900	0900-1000	0900-1000
One-way flow at AM peak hour	40	50	30	20
T - % (AM)	-	-	-	-
PM Peak Hour	1600-1700	1600-1700	1600-1700	1700-1800
One-way flow at PM peak hour	40	50	40	30
T - % (PM)	-	-	-	-
Prop.of commercial vehicles - 16 hr.	-	1.5	-	-
 A.A.D.T.	-	-	-	-
R 12 / 24 - %	-	-	-	-
R 16 / 24 - %	-	-	-	-
AM Peak Hour	-	-	-	-
One-way flow at AM peak hour	-	-	-	-
T - % (AM)	-	-	-	-
PM Peak Hour	-	-	-	-
One-way flow at PM peak hour	-	-	-	-
T - % (PM)	-	-	-	-
Prop.of commercial vehicles - 16 hr.	-	-	-	-

3. OTHER INFORMATION AND COMMENT

4. Vehicle classification and occupancy - Monday to Friday

Time		Class of vehicle									
		Motor	Private	Taxi	Private	PLB	Goods veh.		Non	Fr. Bus	
		Cycle	Car		LB		Light	M & H	Fr. Bus	SD	DD
0700-0800	Pro	0.0	0.0	100.0	0.0	0.0	0.0	0.0	0.0	0.0	0.0
	Ocp	0.0	0.0	1.0	0.0	0.0	0.0	0.0	0.0	0.0	0.0
0800-0900	Pro	0.0	16.7	16.7	0.0	50.0	16.7	0.0	0.0	0.0	0.0
	Ocp	0.0	1.0	1.0	0.0	4.0	1.0	0.0	0.0	0.0	0.0
0900-1000	Pro	20.0	20.0	20.0	0.0	20.0	20.0	0.0	0.0	0.0	0.0
	Ocp	1.0	1.0	1.0	0.0	4.0	1.0	0.0	0.0	0.0	0.0
1000-1100	Pro	0.0	33.3	0.0	0.0	0.0	66.7	0.0	0.0	0.0	0.0
	Ocp	0.0	1.0	0.0	0.0	0.0	1.3	0.0	0.0	0.0	0.0
1100-1200 Peak hour	Pro	0.0	25.0	25.0	0.0	0.0	50.0	0.0	0.0	0.0	0.0
	Ocp	0.0	1.0	1.0	0.0	0.0	1.5	0.0	0.0	0.0	0.0
1200-1300	Pro	0.0	50.0	0.0	0.0	0.0	50.0	0.0	0.0	0.0	0.0
	Ocp	0.0	1.5	0.0	0.0	0.0	1.5	0.0	0.0	0.0	0.0
1300-1400	Pro	0.0	20.0	40.0	0.0	0.0	40.0	0.0	0.0	0.0	0.0
	Ocp	0.0	1.0	1.0	0.0	0.0	1.0	0.0	0.0	0.0	0.0
1400-1500	Pro	0.0	50.0	0.0	0.0	0.0	50.0	0.0	0.0	0.0	0.0
	Ocp	0.0	2.0	0.0	0.0	0.0	1.0	0.0	0.0	0.0	0.0
1500-1600	Pro	20.0	80.0	0.0	0.0	0.0	0.0	0.0	0.0	0.0	0.0
	Ocp	1.0	1.8	0.0	0.0	0.0	0.0	0.0	0.0	0.0	0.0
1600-1700	Pro	0.0	0.0	20.0	0.0	0.0	80.0	0.0	0.0	0.0	0.0
	Ocp	0.0	0.0	1.0	0.0	0.0	1.3	0.0	0.0	0.0	0.0
1700-1800	Pro	16.7	33.3	0.0	0.0	0.0	50.0	0.0	0.0	0.0	0.0
	Ocp	1.0	1.5	0.0	0.0	0.0	1.0	0.0	0.0	0.0	0.0
1800-1900	Pro	0.0	100.0	0.0	0.0	0.0	0.0	0.0	0.0	0.0	0.0
	Ocp	0.0	1.0	0.0	0.0	0.0	0.0	0.0	0.0	0.0	0.0
1900-2000	Pro	16.7	33.3	0.0	0.0	16.7	33.3	0.0	0.0	0.0	0.0
	Ocp	1.0	1.0	0.0	0.0	1.0	1.0	0.0	0.0	0.0	0.0
2000-2100	Pro	0.0	100.0	0.0	0.0	0.0	0.0	0.0	0.0	0.0	0.0
	Ocp	0.0	1.0	0.0	0.0	0.0	0.0	0.0	0.0	0.0	0.0
2100-2200	Pro	0.0	100.0	0.0	0.0	0.0	0.0	0.0	0.0	0.0	0.0
	Ocp	0.0	1.0	0.0	0.0	0.0	0.0	0.0	0.0	0.0	0.0
2200-2300	Pro	0.0	66.7	0.0	0.0	0.0	0.0	33.3	0.0	0.0	0.0
	Ocp	0.0	1.5	0.0	0.0	0.0	0.0	1.0	0.0	0.0	0.0
16 hours	Pro	6.2	36.9	12.3	0.0	7.7	35.4	1.5	0.0	0.0	0.0
	Ocp	1.0	1.3	1.0	0.0	3.4	1.2	1.0	0.0	0.0	0.0

Legend

Pro. Proportion of vehicles in % (Sum may not add up to 100% due to figure rounding)*

Ocp. Average occupancy of vehicles including both driver and passengers*

M&H Medium and Heavy

* All traffic data are collected from combined bounds except for one way traffic